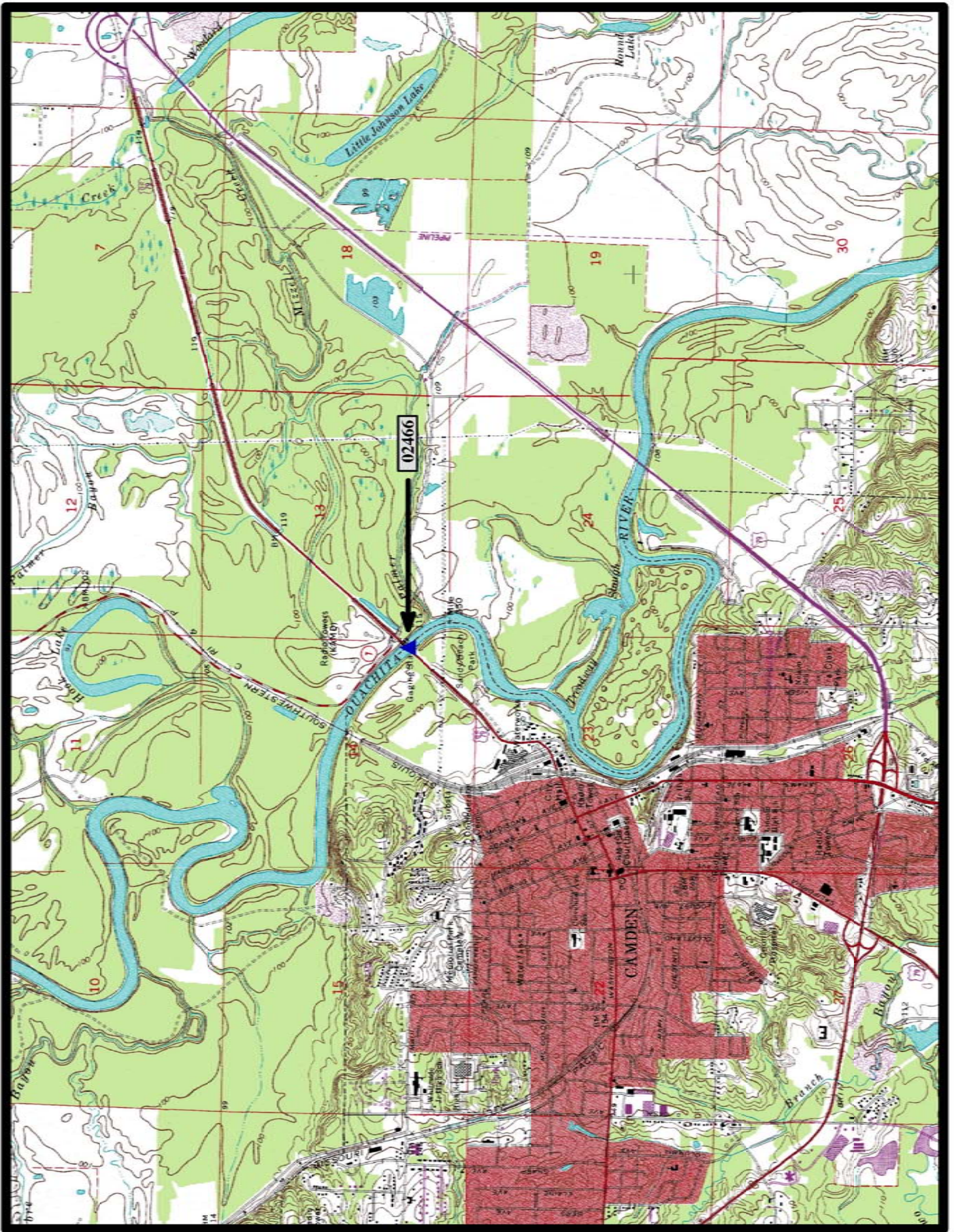


- ▲ In-Service Pratt Pony Truss (7)
- ⊘ Demolished NR Pratt Pony Truss (2)
- ◻ Preserved Pratt Pony Truss (3)

Pratt Pony Truss Bridges



HISTORIC BRIDGE #02466
US HIGHWAY 79B
OUACHITA COUNTY
PRATT PONY TRUSS
CROSSES - OUACHITA RIVER
DATE OF CONSTRUCTION - 1947
BUILDER - D. F. JONES CONSTRUCTION COMPANY, LITTLE ROCK, AR
HISTORIC BRIDGE INVENTORY DATE - 2000
SHPO NUMBER - OU0152
HAER NUMBER -
DATE LISTED ON NATIONAL REGISTER - 6/9/2000
LAT./LONG. 33:35:48.86, -92:49:05.12

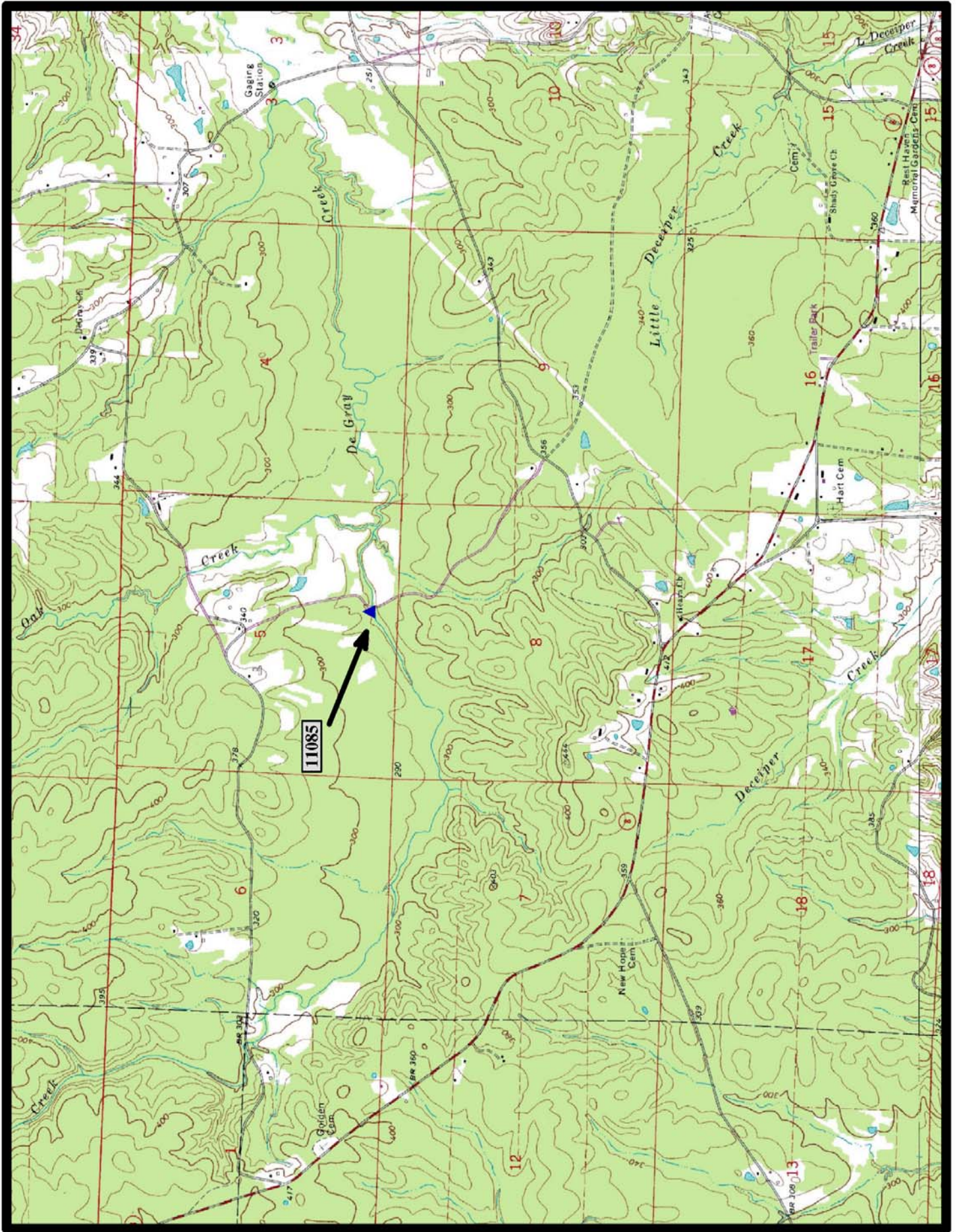


←
North

Camden 7.5 min. Quad



HISTORIC BRIDGE #11085
COUNTY ROAD 50
CLARK COUNTY
PRATT PONY TRUSS
CROSSES - DEGRAY CREEK
DATE OF CONSTRUCTION - 1915c
BUILDER - UNKNOWN
HISTORIC BRIDGE INVENTORY DATE - 2005
SHPO NUMBER - CL0960
HAER NUMBER - AR-81
DATE LISTED ON NATIONAL REGISTER -
LAT./LONG. 34:09:14.55, -93:09:37.83

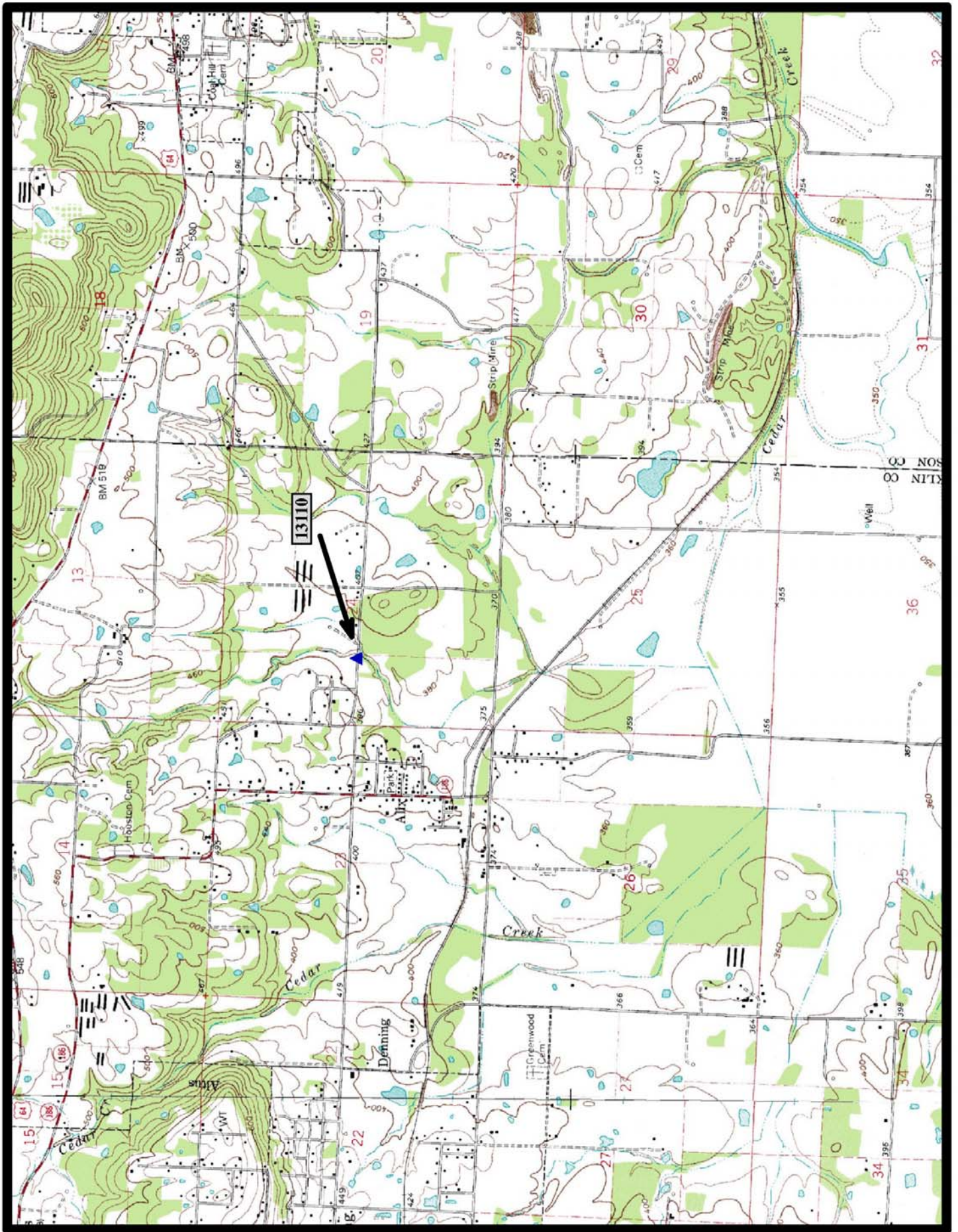


←
North

DeGray 7.5 min. Quad



HISTORIC BRIDGE #13110
PLAINVIEW ROAD (Co. Rd. 537)
FRANKLIN COUNTY
PRATT PONY TRUSS
CROSSES - UNNAMED CREEK
DATE OF CONSTRUCTION – 1940
BUILDER - UNKNOWN
HISTORIC BRIDGE INVENTORY DATE - 2005
SHPO NUMBER – FR0195
HAER NUMBER -
DATE LISTED ON NATIONAL REGISTER -
LAT./LONG. 35:25:41.35, -93:43:17.61

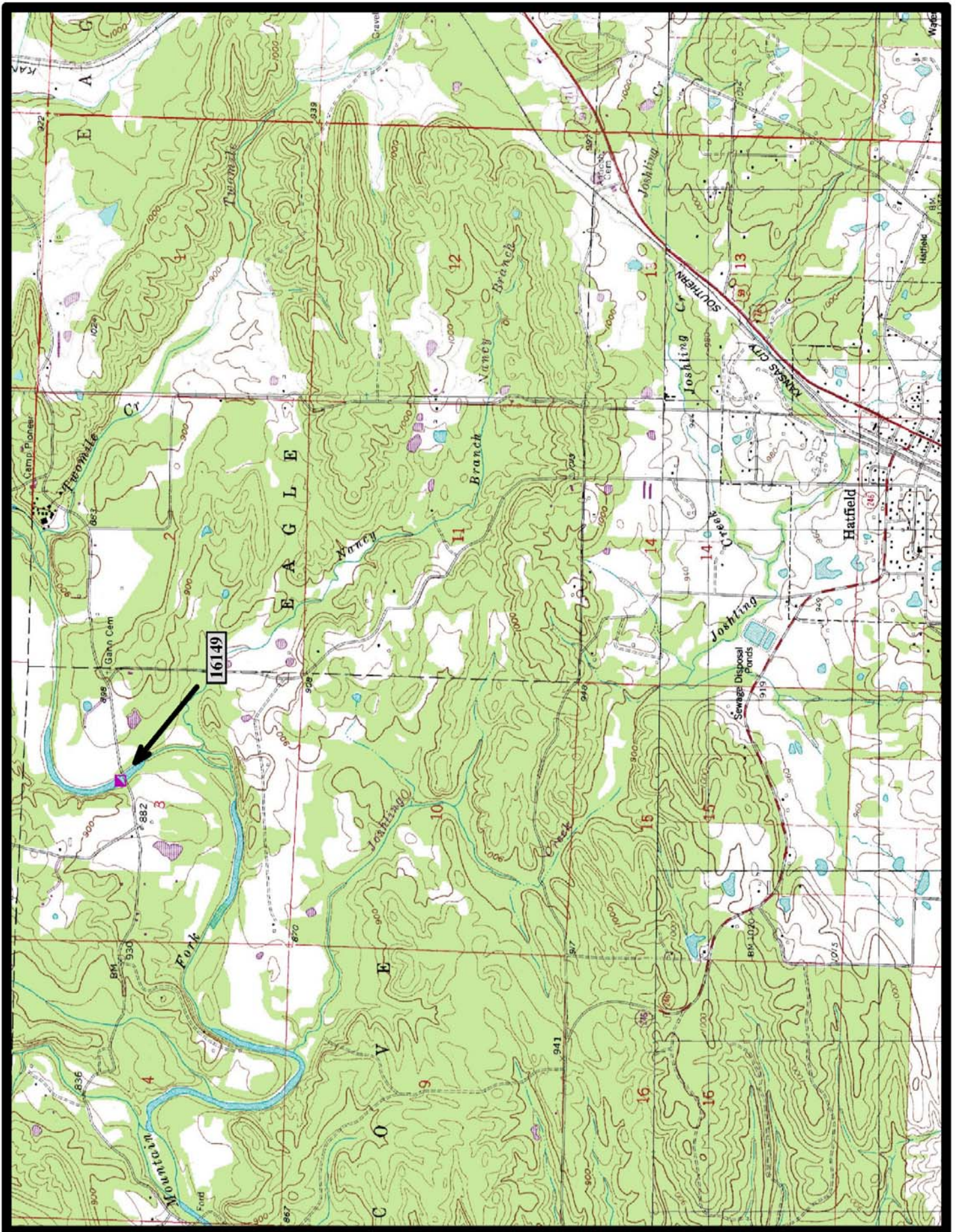


North

Coal Hill 7.5 min. Quad



PRESERVED HISTORIC BRIDGE #16149
CLOSED COUNTY ROAD 38
POLK COUNTY
PRATT PONY TRUSS
CROSSES - MOUNTAIN CREEK
DATE OF CONSTRUCTION - 1905
BUILDER - UNKNOWN
HISTORIC BRIDGE INVENTORY DATE - 1987
SHPO NUMBER - PL0009
HAER NUMBER - AR-34
DATE LISTED ON NATIONAL REGISTER - 4/9/1990
LAT./LONG. 34:31:42.08, -94:23:59.16

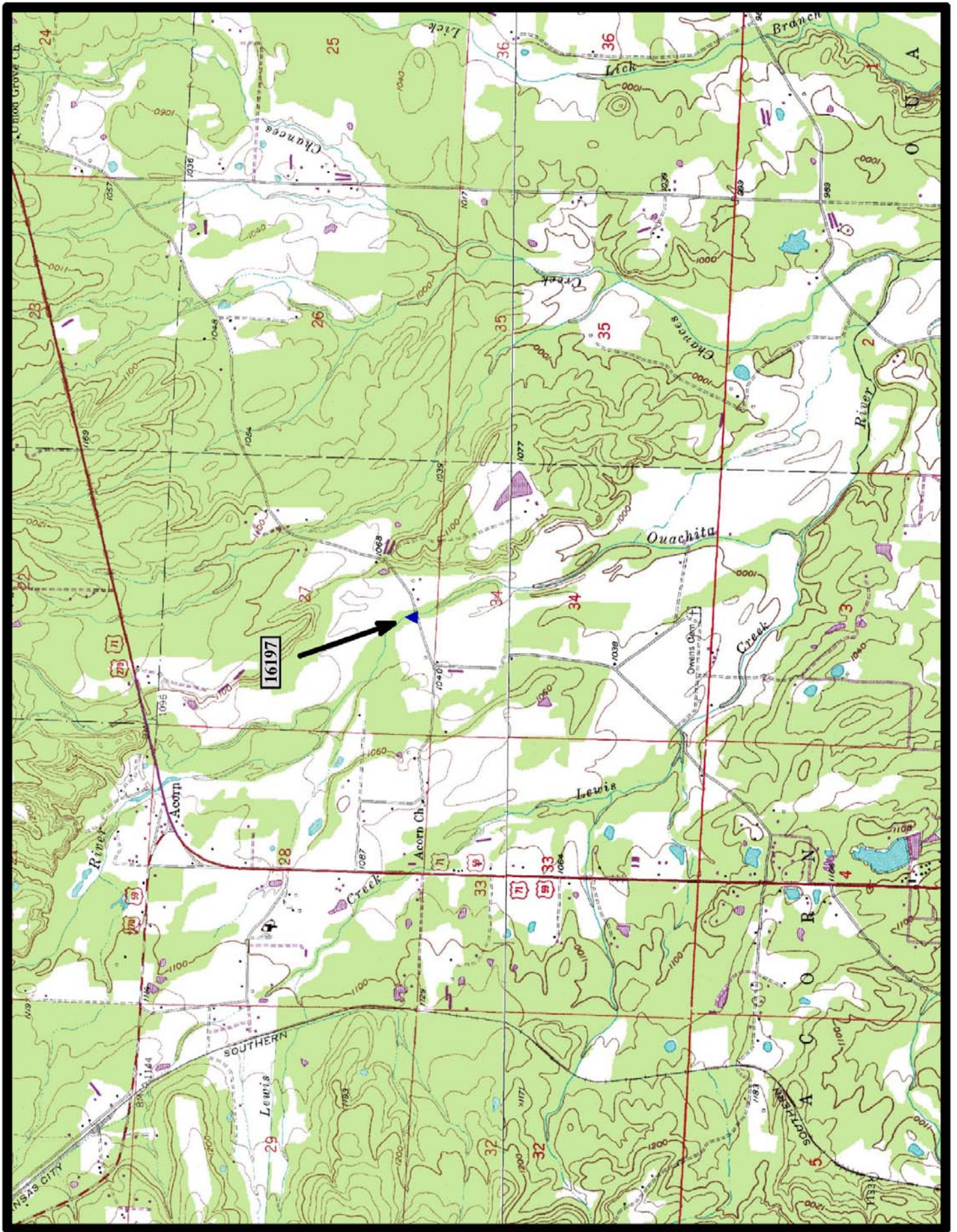


North

Zafra 7.5 min. Quad



HISTORIC BRIDGE #16197
COUNTY ROAD 76
POLK COUNTY
PRATT PONY TRUSS
CROSSES - OUACHITA RIVER
DATE OF CONSTRUCTION – 1914
BUILDER - UNKNOWN
HISTORIC BRIDGE INVENTORY DATE - 2005
SHPO NUMBER – PL0254
HAER NUMBER -
DATE LISTED ON NATIONAL REGISTER -
LAT./LONG. 34:37:48.40, -94:11:15.02

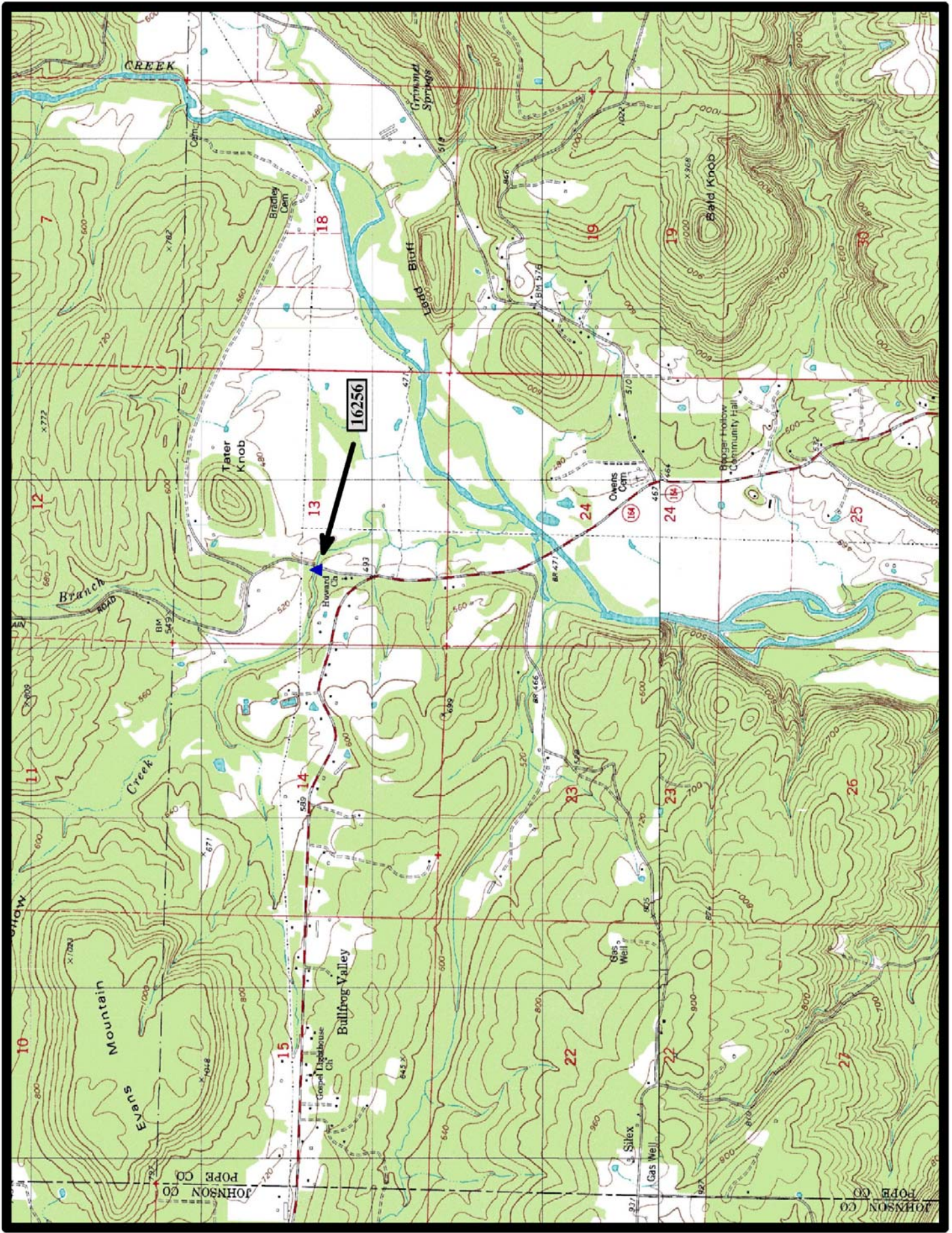


←
North

Acorn 7.5 min. Quad



HISTORIC BRIDGE #16256
COUNTY ROAD 16
POLK COUNTY
PRATT PONY TRUSS
CROSSES - JAKES CREEK
DATE OF CONSTRUCTION - 1930
BUILDER - UNKNOWN
HISTORIC BRIDGE INVENTORY DATE - 2005
SHPO NUMBER - PP0380
HAER NUMBER -
DATE LISTED ON NATIONAL REGISTER -
LAT./LONG. 35:31:05.41, -93:10:56.58



↑
North

Treat 7.5 min. Quad